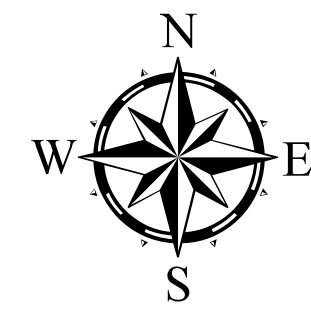
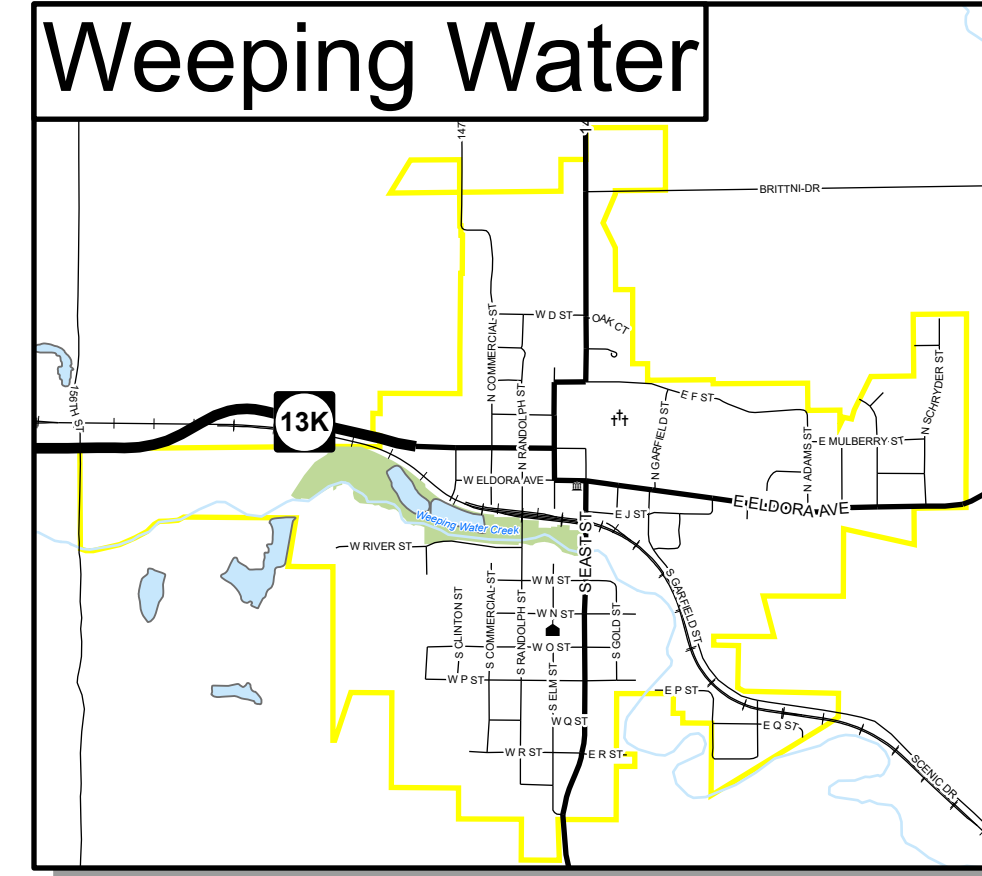
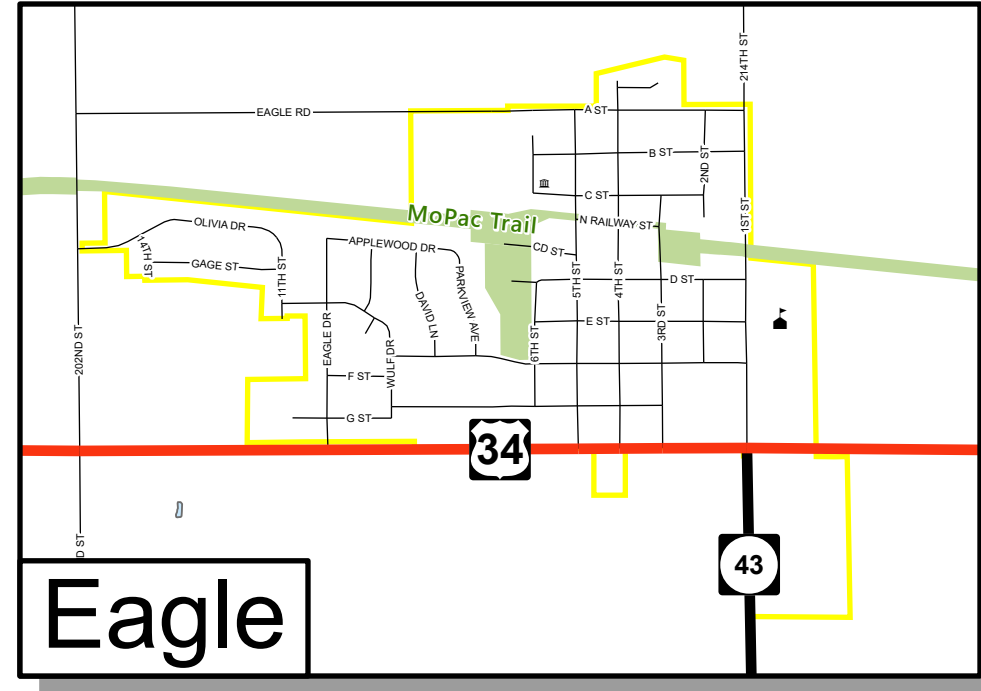
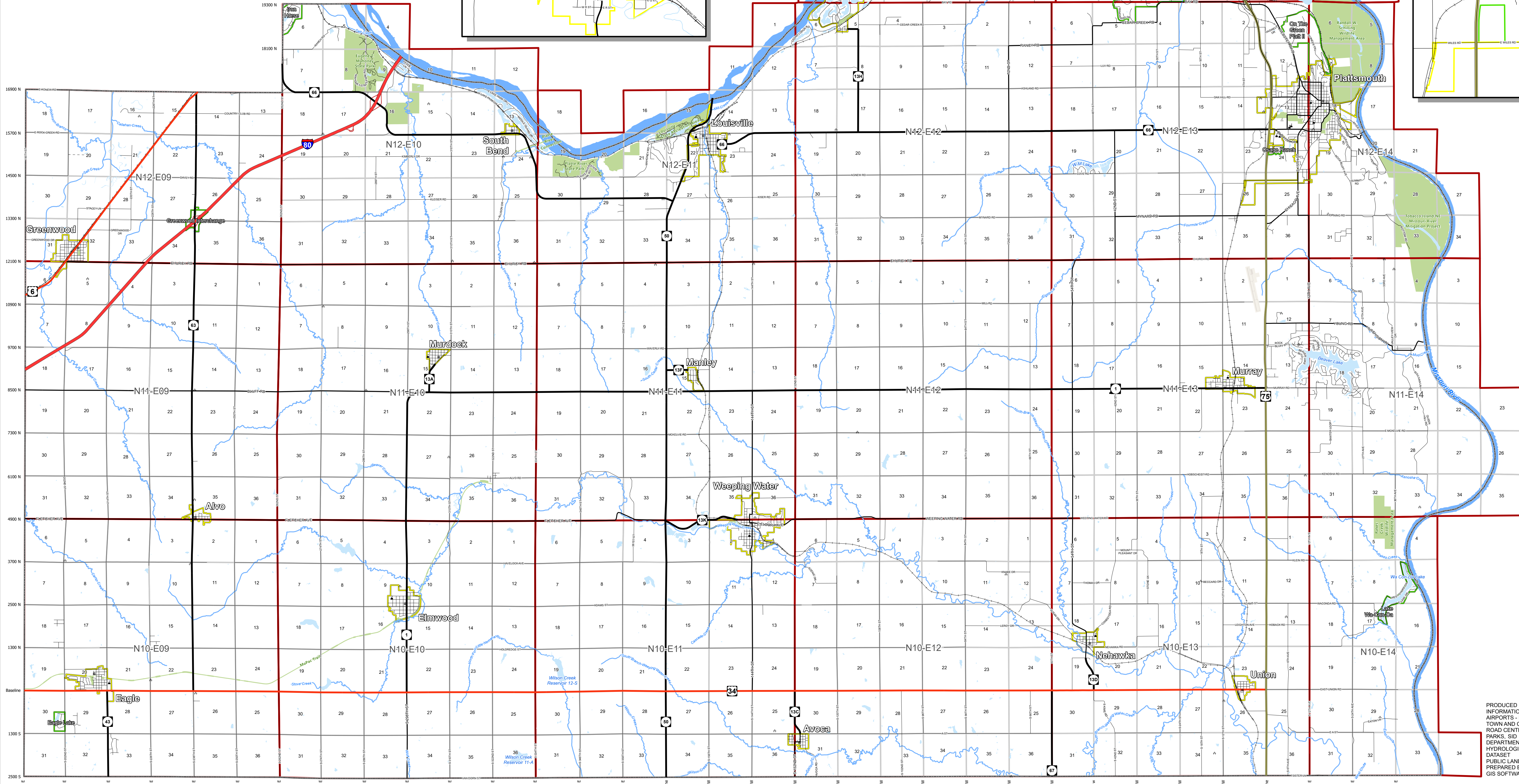
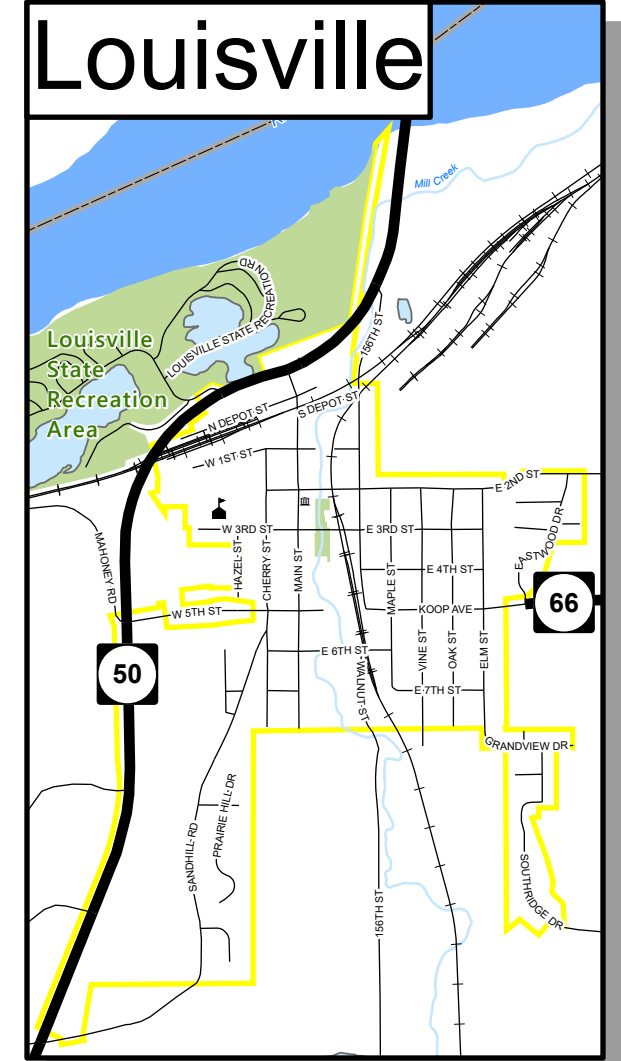
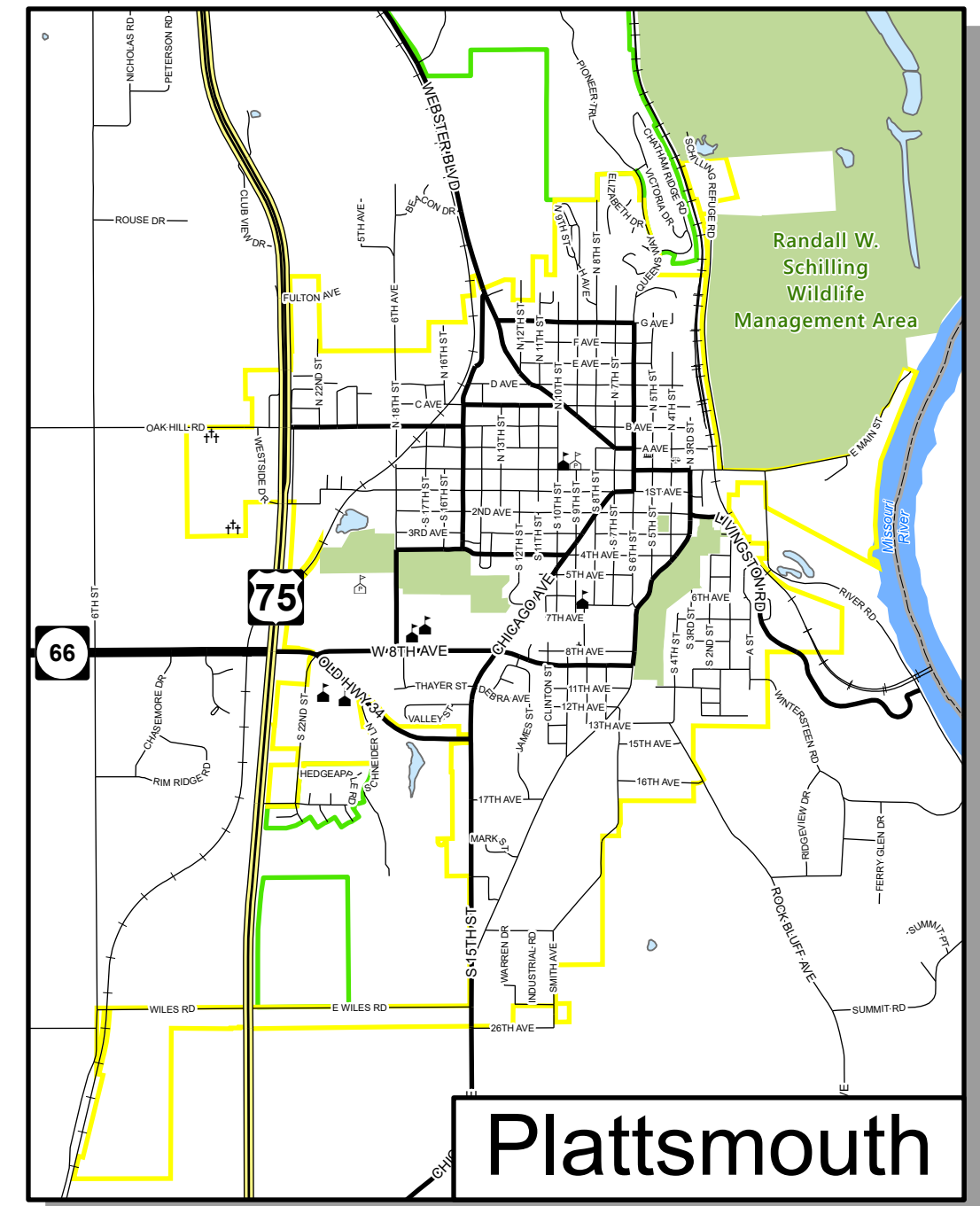


Cass County, Nebraska



Public Buildings	USPLSS	Road Type	Plattsmouth Airport
Courthouse	Sections	Interstate	Airport
City Hall	Townships	Interstate Ramp	Runway
Public School	Reference	Expressway	
Private School	County Boundary	Ramp	
Cemeteries	Rivers	Federal Highway	
	Lakes	State Highway	
Municipal Areas	Parks	Primary Road	
Town and City Limits		Local Road	
SID		Minimum Maintenance	
		Railroad	



Scale: 1:72,000

PRODUCED BY CASS COUNTY GIS DEPARTMENT
 INFORMATION SOURCES
 AIRPORTS - FEDERAL AVIATION ADMINISTRATION
 TOWN AND COUNTY BOUNDARIES - US BUREAU OF CENSUS
 ROAD CENTERLINES - MODIFIED DATA FROM US BUREAU OF CENSUS
 PARKS, SID BOUNDARIES, SCHOOLS, CEMETERIES - CASS COUNTY GIS DEPARTMENT
 HYDROLOGICAL DATA - MODIFIED USGS NATIONAL HYDROGRAPHY DATASET
 PUBLIC LAND SURVEY - STATE OF NEBRASKA GIS
 PREPARED BY: S. KENNEDY 5/17/2022
 GIS SOFTWARE - ARCPRO 2.9

THIS MAP IS FOR REFERENCE PURPOSES ONLY.
 The map is created from a subset of data from the Cass County Geographic Information System (GIS) database. The County of Cass makes no claims, no representations, and no warranties, expressed or implied, concerning the validity, the reliability, or the accuracy of the GIS data and GIS data products furnished by the County, including the implied validity of any uses of such data. Please consult the appropriate office to confirm any questions you have.